

# *forever* Cape

*a campaign for our community*



CAPE ELIZABETH LAND TRUST





## A Campaign for Our Community

Cape Elizabeth (Cape) is renowned for its stunning coastal vistas, wooded trails, and active farmlands. Nearly 35 years ago, a small group of committed Cape residents came together to work on preserving this beautiful rural community for generations to come.

The Cape Elizabeth Land Trust (CELT) operates with a small staff, supplemented by a dedicated and talented cadre of more than 200 volunteers who donate over 6,500 hours of their time annually. Since its founding in 1985, CELT – along with participating landowners and vital partners like the Town of Cape Elizabeth – has preserved 29 properties and 770 acres of land.

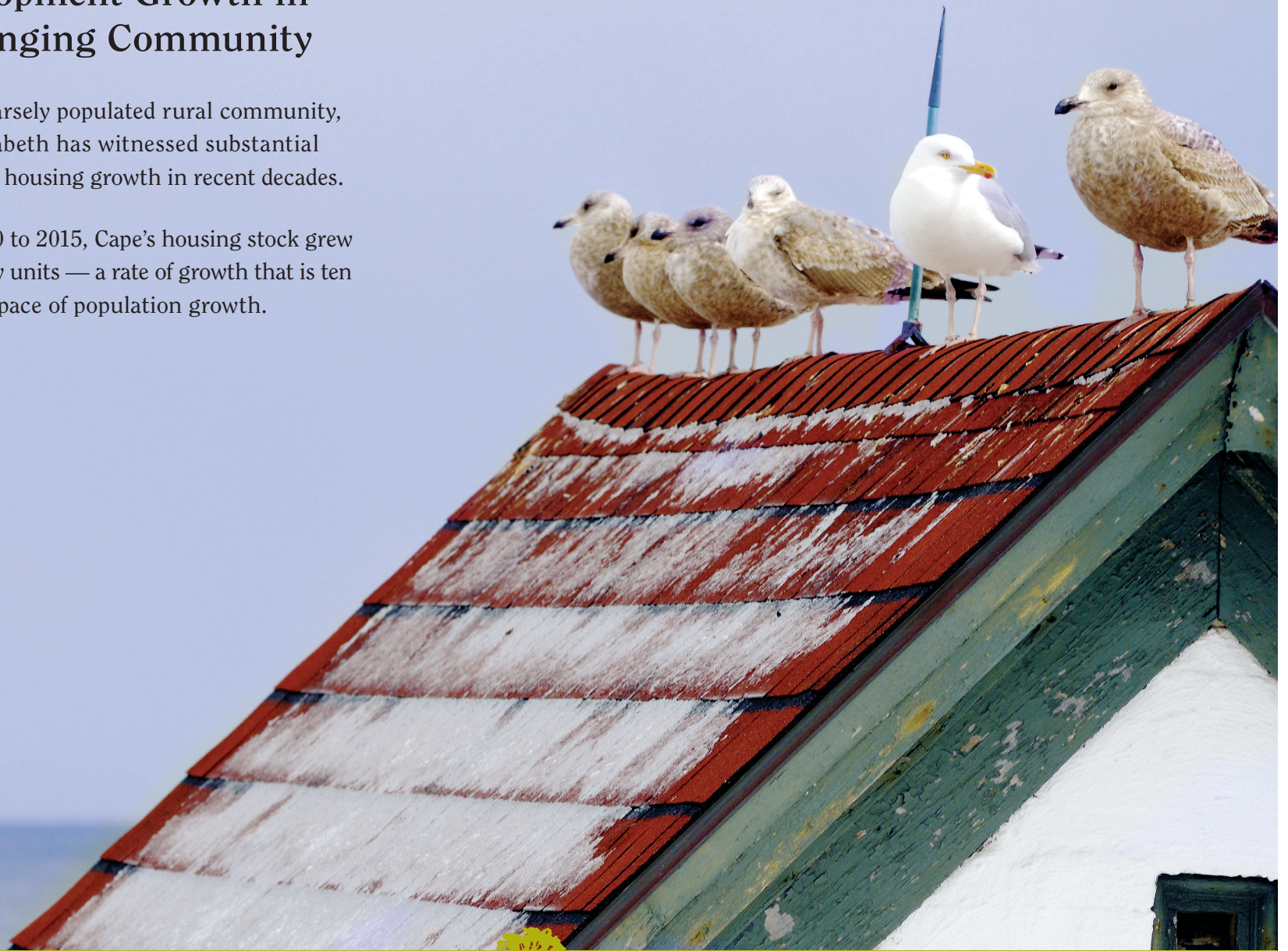
CELT is the only organization in town focused solely on land conservation to preserve the heritage and open space in Cape so that residents and visitors can explore and appreciate its properties in perpetuity — *meaning forever.*



## Development Growth in a Changing Community

Once a sparsely populated rural community, Cape Elizabeth has witnessed substantial residential housing growth in recent decades.

From 2000 to 2015, Cape's housing stock grew by 364 new units — a rate of growth that is ten times the pace of population growth.





## The Erosion of Cape's Rich Agricultural Heritage

Although many farms remain in Cape today, their numbers are diminishing having been replaced by residential development. Town-wide surveys have repeatedly and overwhelmingly shown that maintaining the viability of local, safe, and reliable food sources is highly valued by Cape Elizabeth residents.







## Habitat Destruction *Imagine the silence of spring with no peepers!*

For many in rural areas, going to bed listening to spring peepers is a sure harbinger of spring. Yet in many areas, this experience is now a mere memory. When a parcel of land is developed, hundreds of species are negatively impacted and most are permanently displaced. Thanks to CELT's conservation efforts, Robinson Woods, to cite but one example, is a thriving ecosystem, with 300-year-old trees and a broad array of wildlife.





## Cape Character and Identity

Residents of Cape Elizabeth express pride and joy when they talk of the local farms, sandy beaches, dramatic rocky coastline, and mature forests. The Town Comprehensive Planning Committee revealed this sentiment when their 2017 survey found that protecting the natural environment is the #1 priority for citizens:

- 97% support efforts to protect environmental quality
- 96% support efforts to protect and preserve wetlands, ponds, and wooded areas
- 92% support efforts to preserve the town's rural character



# *forever* Cape

## a Campaign for Our Community

\$5 MILLION MINIMUM —  
\$6.25 MILLION OPTIMUM

After extensive strategic planning and a campaign feasibility study, CELT has identified minimum funding needs of \$5,000,000 and optimum funding needs of \$6,250,000 to secure and steward conservation priorities in Cape Elizabeth over the next 5-10 years.

Our comprehensive campaign, “Forever Cape”, will seek gifts from a broad base of supporters, including our Board of Directors, our Advisory Council, land trust members, private foundations, government grants, and public entities. Campaign support will fund the following urgent campaign needs:





## Protecting & Stewarding Land in Perpetuity

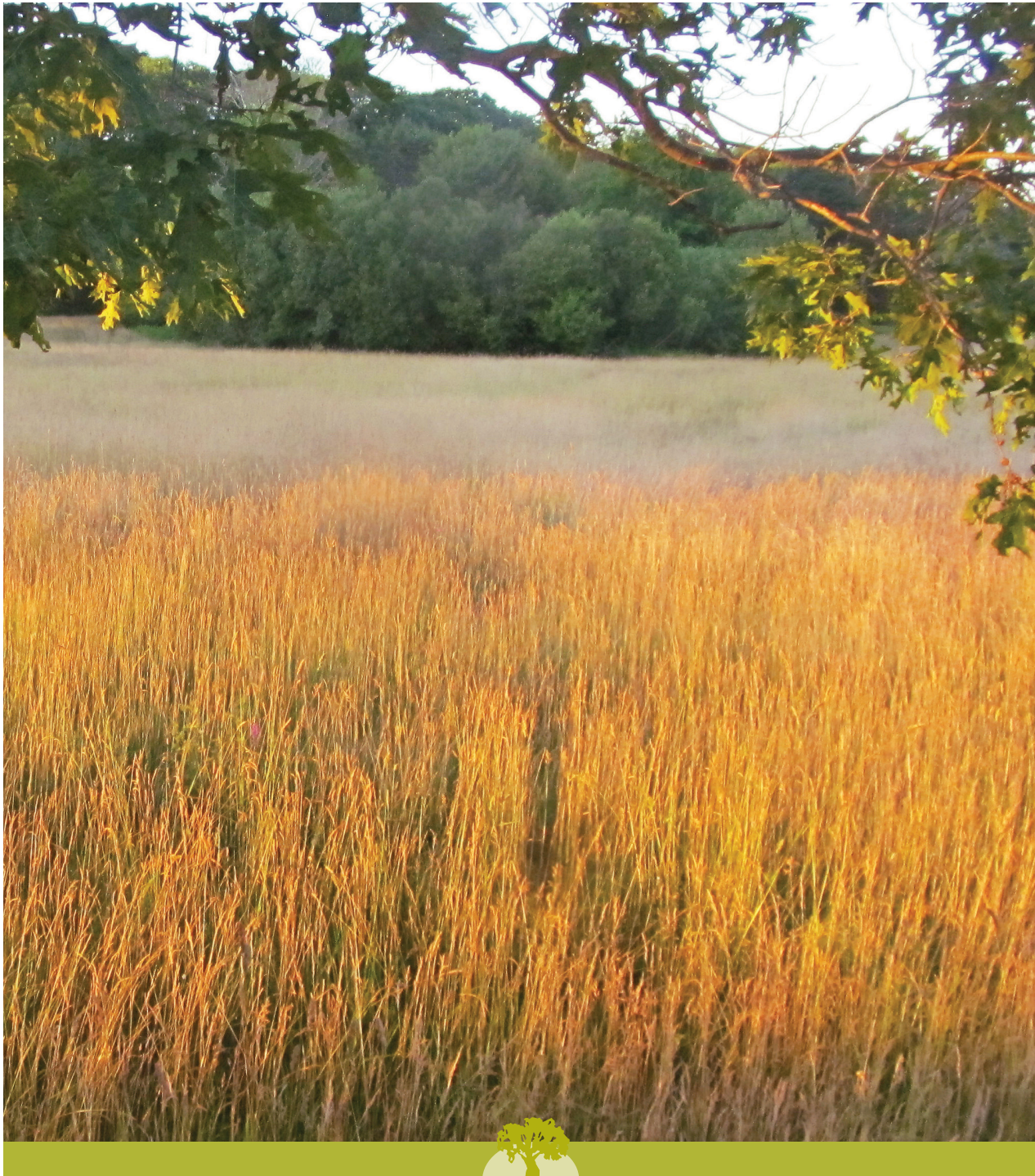
\$3.3 MILLION MINIMUM —

\$4 MILLION OPTIMUM

### *Immediate Key Opportunities:*

- a 52-acre expansion of Robinson Woods
- a 30-acre acquisition at 498 Spurwink Avenue

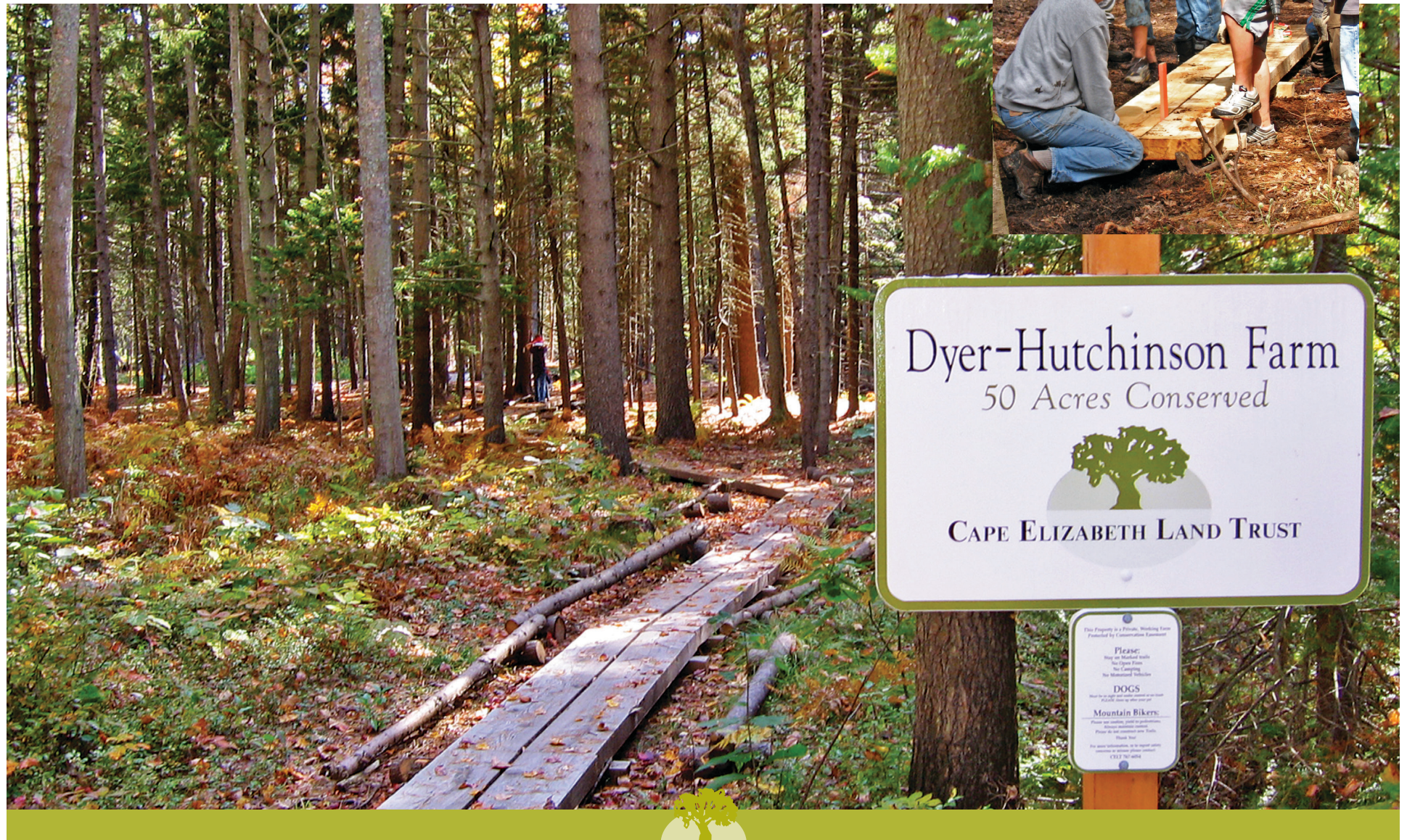
There are also several additional projects in process involving farms, woodlands, and open fields, that all meet the needs and priorities of our strategic vision for our community. Twenty percent of acquisition and easement costs will be applied to perpetual stewardship.





## Caring for Land (5-year needs) \$250,000 MINIMUM — \$300,000 OPTIMUM

CELT's work does not stop when we purchase land. There are immediate needs such as bridges, invasive species removal, boardwalks and trails development to provide public access, all that require staff and volunteer time and materials.







## Planning for Tomorrow (General Endowment Fund)

\$750,000 MINIMUM — \$1,200,000 OPTIMUM

Expansion of the General Endowment Fund as a part of this campaign will support preserving CELT properties forever and will allow the organization to continue to engage, educate, and connect the community with conserved lands.



## Supporting Operations (FY18 – FY20)

\$700,000 MINIMUM — \$750,000 OPTIMUM

This portion of the campaign will ensure that annual operations revenue covers all budget needs for running the organization, including funds for educational programs, stewardship activities, land protection, and working with landowners so we can continue to do our good work.





# *Join forever* Cape – *a campaign for our community.*

## SUMMARY OF CAMPAIGN PRIORITIES

<b>Land Protection</b> .....	\$3,300,000 - \$4,000,000
<b>Caring for Land</b> .....	\$250,000 - \$300,000
<b>General Endowment Fund</b> .....	\$750,000 - \$1,200,000
<b>Operations (FY18 – FY20)</b> .....	\$700,000 - \$750,000
<b>Total Campaign</b> .....	\$5,000,000 - \$6,250,000
	Minimum                  Optimum

Cape Elizabeth is a special place. Like us, you recognize the importance of nature, farmlands, and recreational access in our town. Once CELT conserves land, it is preserved forever. Please join us in making future generations proud of the foresight of conserving this beautiful place for generations to come. Your support will make a real difference in preserving the character of Cape and in determining our public goal to be announced in 2020.



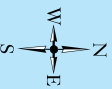


# CAPE ELIZABETH Town and Trail Map

Cape Elizabeth Land Trust

Map of Cape Elizabeth, LLC  
www.capeelizabethmap.com

Map Scale  
1.0  
scale in miles  
2.0



Walking or Hiking Trail  
 Fort Williams Bicycle Loop (15 miles)  
 Beach-to-Beacon Running Route  
 Cross Town Trail

Parking  
 Trail Description  
 Point of Interest  
 Wetlands  
 CELT OWNED  
 Scenic  
 Swimming  
 Farmstand  
 Bridging  
 Lighthouse

TOWN OWNED  
 CELT EASEMENT  
 STATE OWNED  
 FEDERAL OWNED

